

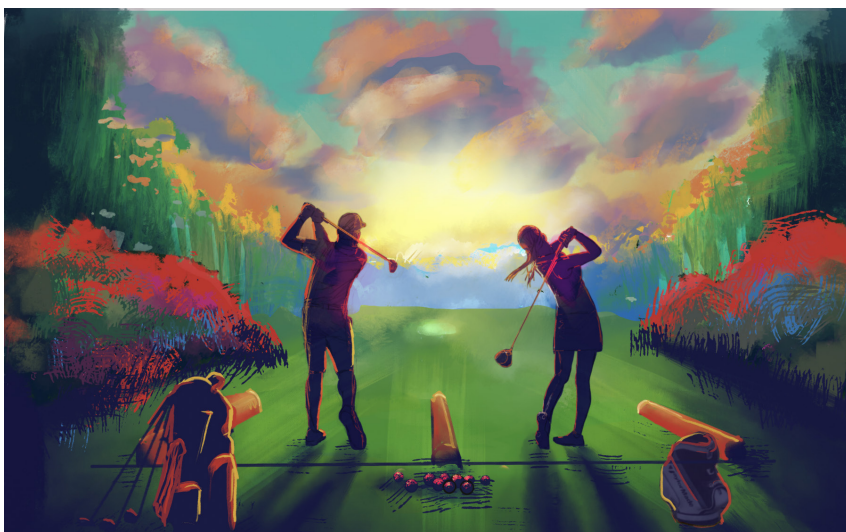


PRIME

WEDNESDAY, JUNE 11TH | BEER DINNER



DINNER IS
FEATURING OUR
PGA
COLLABORATION
BEER



**PGA REACH NENY Partners with Whitman Brewing Company to Launch a New Collaborative Beer
- “Range Session”, Supporting Community Golf Initiatives and
PGA HOPE “Helping Our Patriots Everywhere”**

ABOUT WHITMAN BREWING COMPANY

Whitman Brewing Company charges forward in the city of Health, History, and Horses - promoting “Art in All Forms”.

The family-owned business is comprised of the a taproom on the first floor, beer hall and the Walt Cafe on the second floor. It officially opened its doors in December 2019, just months before the onset of the COVID-19 pandemic.

Beer at Whitman is not just something you can have a discussion over, but something that you can have a discussion about. It will challenge you to think about beer in a different way — as a foundation of culture and conversation. Whitman provides you a well rounded list of beers, with focus on classic American craft styles and continental European lagers.

LOCAL SARATOGA BREWERY



SARATOGA NATIONAL GOLF CLUB

458 Union Avenue • Saratoga Springs • 518.306.2330

Reserve • www.primeatsaratoganational.com/shop/

\$95^{++/pp} • 6PM Doors Open • 6:45PM Seating
Stationary Bites | 4 Course Menu | 6 Beers